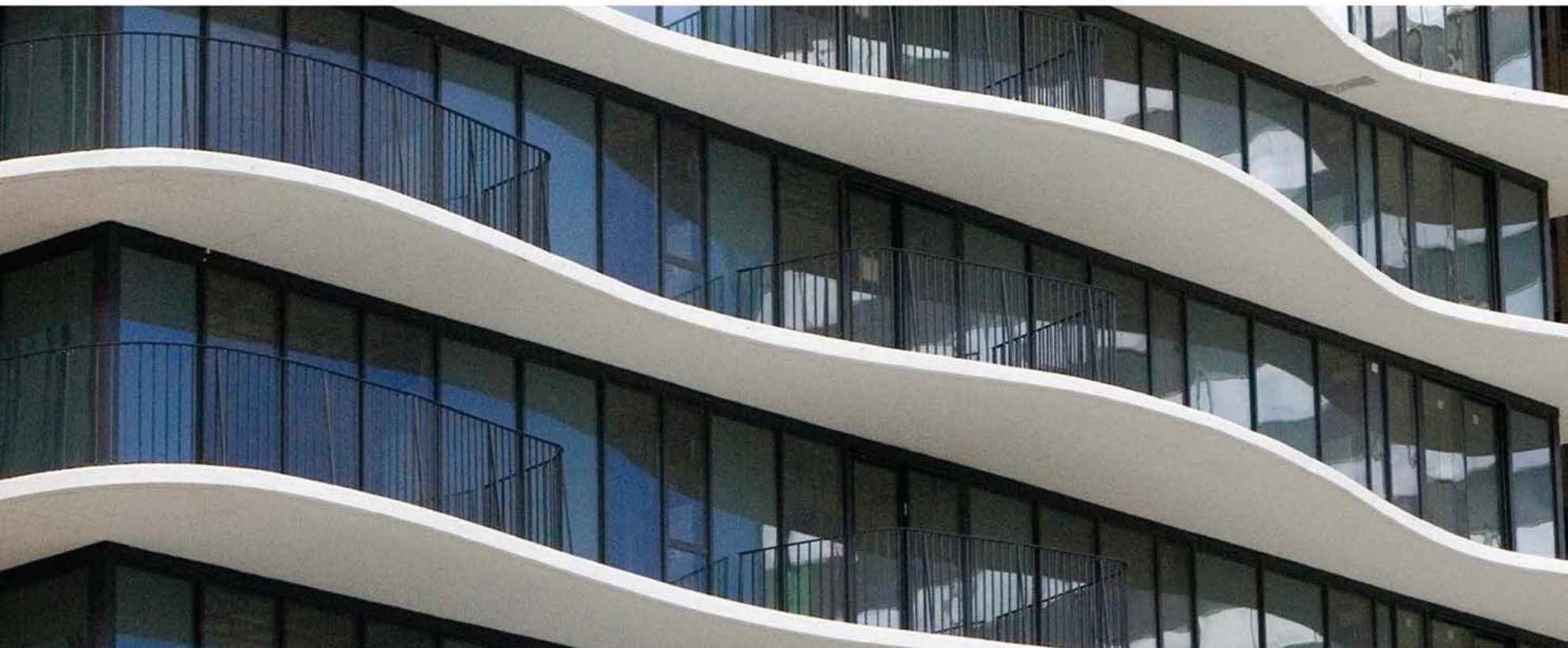


MONUMENTAL BUILDINGS



A MONUMENTAL DIFFERENCE





Complex, large-scale building projects are monumental undertakings in design, testing and execution. EFCO's vertically integrated support system can help provide services to more easily accomplish your design intent.

With a seasoned team of in-house architectural and engineering experts, EFCO delivers on customized solutions for your window system, curtain wall, storefront and entrance needs, from the development phase to completion.

We provide it all with single-source accountability throughout the process. EFCO is committed to seeing you succeed in delivering on the design and performance intent of your project.

We are proud to point to the structures in this book as examples of our work with visionary architectural partners around the country and invite you to learn more about how our monumental building experience might help your project.

AQUA

82-STORY MIXED-USE
RESIDENTIAL SKYSCRAPER
CHICAGO, IL



DESIGN TEAM:

Studio Gang Architects, with James Loewenberg of Loewenberg & Associates as the Architect of Record

EFCO:

The Aqua is the first skyscraper in Chicago to contain condominiums, apartments, retail space and a hotel. Standing 82 stories, it seamlessly integrates EFCO Series 2900 windows and 3015 sliding glass doors into what is arguably the most recognizable new structure in the Chicago skyline.

NOTEWORTHY:

Awarded the Emporis Skyscraper Award as 2009 Skyscraper of the Year and shortlisted in 2010 for the biennial International Highrise Award.



SUTTON PLACE 57

36-STORY CONDO
NEW YORK, NY

DESIGN TEAM:

Charles Collins Ismael
Leyva Architects

EFCO:

Series T400 TerraStile®, Series
T450 TerraStile®, Series 890-I
Equa-Vu™ (TS), System 5600

NOTEWORTHY:

Located in the affluent
Sutton Place neighborhood
of Midtown, Manhattan. The
crystal lobby and garden fixtures
result from partnership with
Baccarat of France. EFCO blue
reflective glass custom curtain
wall façade adorns the exterior,
and the building's shape
features several dramatic angles.





NIC ON 5TH

26-STORY LUXURY
HIGH-RISE APARTMENT
MINNEAPOLIS, MN



DESIGN TEAM:

Opus Design Build, LLC

EFCO:

This 26-story luxury high-rise apartment building is considered a market-changing project in downtown Minneapolis. Nic on 5th offers amazing views and top-of-the-line amenities for its tenants. EFCO provided a variety of products, from the 810-I window system to the 5900 curtain wall, all helping the team achieve a unique look, as well as a LEED® Certification.

NOTEWORTHY:

BRE, Best in Real Estate Winner

THE SHOREHAM

46-STORY MIXED-USE
CHICAGO, IL

DESIGN TEAM:

Lowenberg + Associates, Inc.

EFCO:

Series 3902(T) windows, Series 510(T) windows, Series 3900 fixed windows, Series 3001(T) windows

NOTEWORTHY:

Named 2007 Community Apartment of the Year and winner of 10 CAMME awards from the Chicagoland Apartment Association and the coveted Paragon award from the National Apartment Association.



COAST AT 46-STORY CONDO
CHICAGO, IL

LAKE SHORE EAST



DESIGN TEAM:

bKL Architects

EFCO:

Situated in one of Chicago's most desirable downtown locations, Coast at Lakeshore East is the neighborhood's first 100% smoke-free environment, offering spectacular views of the Chicago River, Millennium Park and the Chicago skyline. EFCO was instrumental in making those views possible, delivering Series 2900 fixed and projected windows, as well as T-350 TerraStile® doors, all on an aggressive schedule.

NOTEWORTHY:

Received a LEED® Silver certification.

36-STORY MULTI-USE
HIGH-RISE APARTMENT
MINNEAPOLIS, MN

LPM APARTMENTS



DESIGN TEAM:

Loewenberg Architects, LLC

EFCO:

Modern architecture is on full display at the LPM Apartments in downtown Minneapolis. Featuring EFCO curtain wall framing with custom break metal slab covers and EFCO Series 450X windows along with entrance and terrace doors, the LPM is a glass-inspired showpiece.

NOTEWORTHY:

Received a LEED® Silver certification.



4MARRQ

30-STORY MULTI-USE
HIGH-RISE APARTMENT
MINNEAPOLIS, MN



DESIGN TEAM:

UrbanWorks Architecture LLC

EFCO:

EFCO sliding doors and Series 3903 windows helped contribute to the stylish exterior and bring the views of the city to life.

NOTEWORTHY:

Building includes a 360-degree viewing deck.



RITZ-CARLTON RESIDENCES

HISTORIC RESTORATION
CHICAGO, IL



DESIGN TEAM:

Solomon Cordwell Buenz Architecture

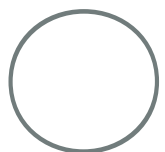
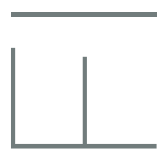
EFCO:

Initially constructed in 1975 in a tower atop Chicago's famed Water Tower Place, the historic, Art Deco Ritz-Carlton Residences have undergone a massive restoration; EFCO was happy to participate, supplying both 3903 and 810-I fixed windows, as well as T351 terrace doors that provide essential views in every direction, adding to the singularly upscale feel of the structure.

NOTEWORTHY:

40 stories





THE

OFFICE RENOVATION
INTO LUXURY APARTMENTS
ATLANTA, GA



DESIGN TEAM:

ARC3 Architecture, Inc.

EFCO:

Series 3500 sliding windows, Series 3900 fixed windows, Series 403 storefront, Series 5600 curtain wall, Series D500 entrance doors

NOTEWORTHY:

How do you transform an office tower into a luxury apartment building? With vision, purpose and attention to every last detail. The building provides commanding views of downtown Atlanta. Eight-foot windows from EFCO make the views even more incredible.

OUR PROCESS

THROUGH VERTICAL INTEGRATION, WE FULLY DELIVER EVERY ASPECT OF YOUR PROJECT.



DESIGN



MANUFACTURING



DELIVERY



BENEFITS OF OUR PROCESS

QUALITY CONTROL

ENGINEERING EXPERTISE

INSTALLATION TRAINING

ON-TIME DELIVERY

EASY IN-FIELD ASSEMBLY

DEDICATED FIELD REP

CONSIDER EFCO FOR YOUR NEXT MONUMENTAL PROJECT.