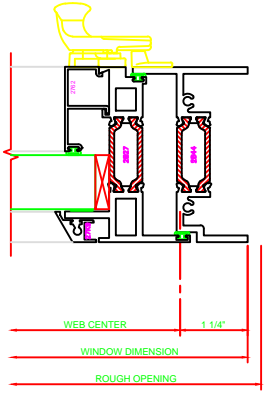
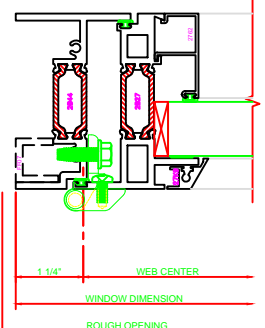


440 JAMB
325G
CASEMENT OUT
4-BAR ARMS

NOTE:
THE HINGED JAMB FRAME SHALL BE INSTALLED PLUMB. ALL HINGES SHALL BE SECURELY BLOCKED AND ANCHORED TO THE CONDITION THROUGH THE HINGES OR AS CLOSE AS POSSIBLE TO THE HINGES.



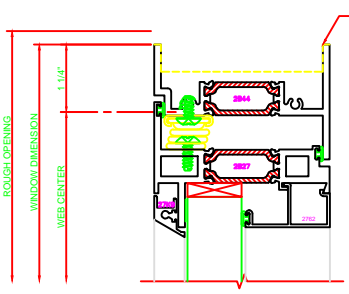
441 JAMB
325G
CASEMENT OUT
CAM LOCK



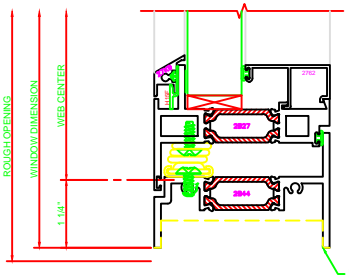
442 JAMB
325G
CASEMENT OUT
BUTT HINGES

140 HEAD
325G
CASEMENT OUT
4-BAR ARMS

240 SILL
325G
CASEMENT OUT
4-BAR ARMS



141 HEAD
325G
CASEMENT OUT
BUTT HINGES



241 SILL
325G
CASEMENT OUT
BUTT HINGES

