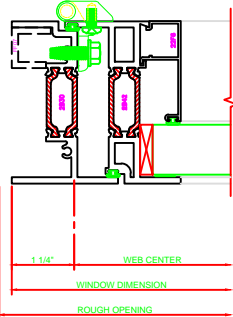
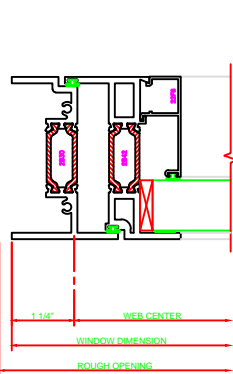


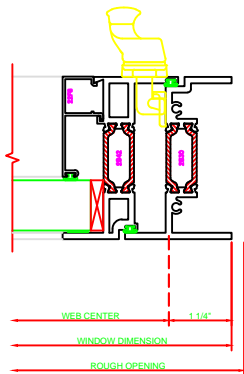
**ERECTOR NOTE:**  
 THE HINGED JAMB FRAME SHALL BE INSTALLED PLUMB. ALL HINGES SHALL BE SECURELY BLOCKED AND ANCHORED TO THE CONDITION THROUGH THE HINGES OR AS CLOSE AS POSSIBLE TO THE HINGES.



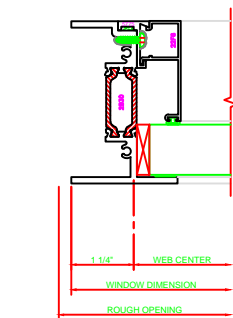
**432 JAMB**  
 325 CASEMENT IN BUTT HINGES



**430 JAMB**  
 325 CASEMENT IN 4-BAR ARMS

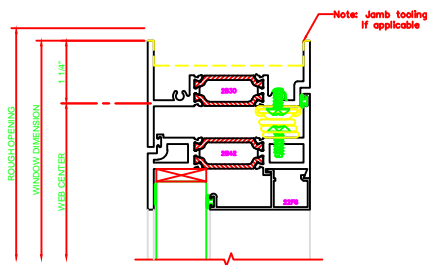


**431 JAMB**  
 325 CASEMENT IN CAM LOCK

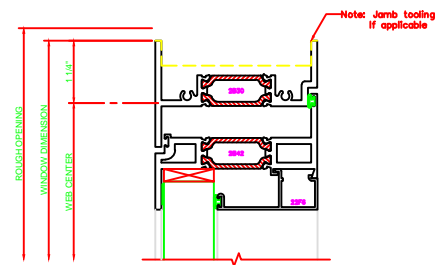


**402 JAMB**  
 325 FIXED \ PROJECT IN

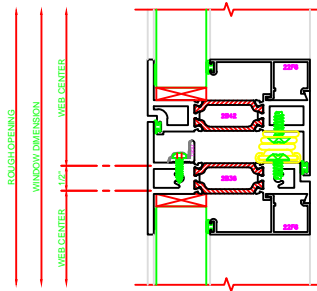
**130 HEAD**  
 325 CASEMENT IN 4-BAR ARM



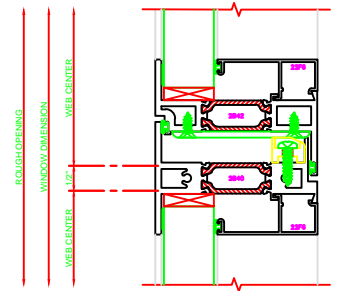
**131 HEAD**  
 325 CASEMENT IN BUTT HINGES



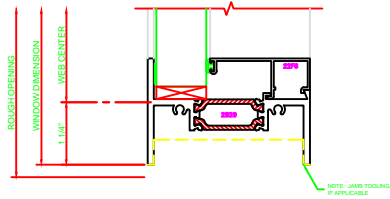
**532 MEETING RAIL**  
 325 CASEMENT IN / FIXED 4-BAR ARMS



**533 MEETING RAIL**  
 325 CASEMENT IN \ FIXED BUTT HINGES



**200 SILL**  
 325 FIXED



NOTE: JAMB TOOLING IF APPLICABLE