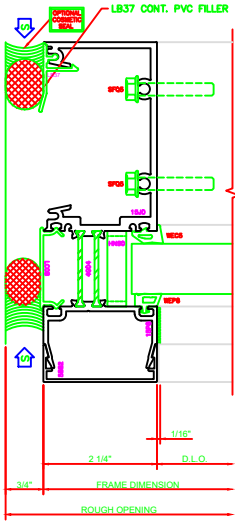
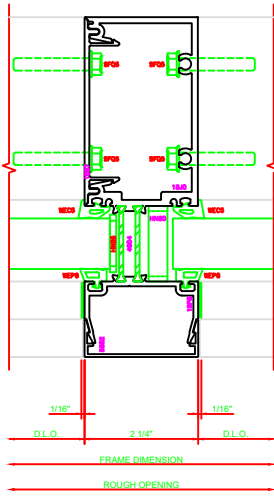


ERASE NOTE  
 NOTE: WHEN USING TUBULAR HORIZONTAL COVER THE 3/8" GAP SHOWN IS USED. WHEN USING THE 2-PIECE HORIZONTAL COVER/PRESSURE PLATE, THE COVER WILL HAVE A 3/8" GAP AND PRESSURE PLATE WILL HAVE 3/8" GAP ON EACH END. ADJUST ACCORDINGLY.

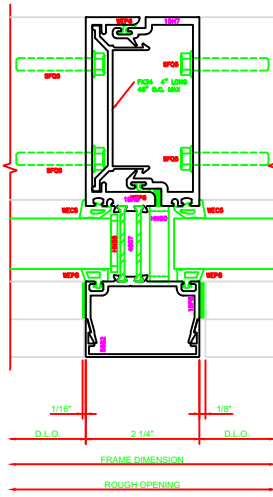
412 I.G. JAMB  
 SERIES: 5500 6"



614 I.G. VERT.  
 SERIES: 5500 6"

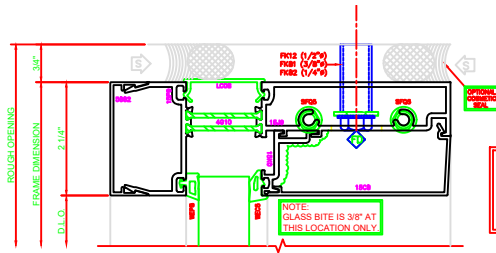
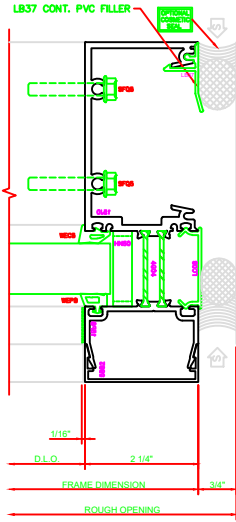


615 I.G. EXPANSION VERT.  
 SERIES: 5500 6"



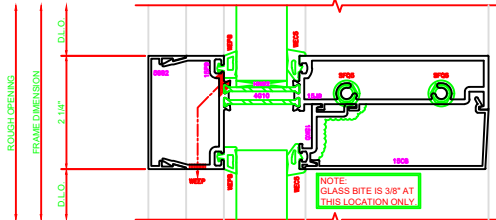
ERASE NOTE  
 NOTE: WHEN USING TUBULAR HORIZONTAL COVER THE 3/8" GAP SHOWN IS USED. WHEN USING THE 2-PIECE HORIZONTAL COVER/PRESSURE PLATE, THE COVER WILL HAVE A 3/8" GAP AND PRESSURE PLATE WILL HAVE 3/8" GAP ON EACH END. ADJUST ACCORDINGLY.

413 I.G. JAMB  
 SERIES: 5500 6"

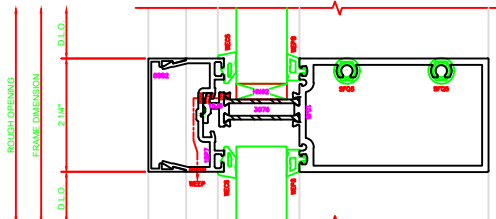


107 I.G. HEAD  
 SERIES: 5500 6"

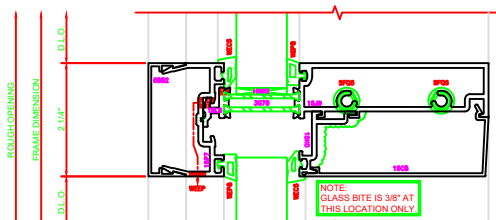
NOTE: MAXIMUM REACTION FOR S5500 SCREW SPLINE SYSTEM IS 1600# @ INTERMEDIATE, 800 # @ JAMBS. FOR HIGHER LOADS USE MULLION "F" AND "M" ANCHORS WITH DROP ON HEADS AND SILLS.



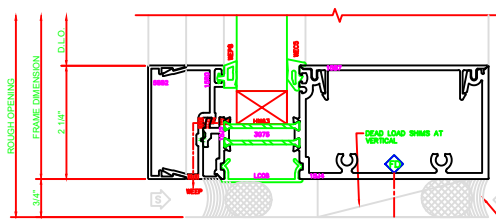
507 I.G. HORZ.  
 SERIES: 5500 6"



508 I.G. HORZ.  
 SERIES: 5500 6"



509 I.G. HORZ.  
 SERIES: 5500 6"



206 I.G. SILL  
 SERIES: 5500 6"

NOTE: MAXIMUM REACTION FOR S5500 SCREW SPLINE SYSTEM IS 1600# @ INTERMEDIATE, 800 # @ JAMBS. FOR HIGHER LOADS USE MULLION "F" AND "M" ANCHORS WITH DROP ON HEADS AND SILLS.