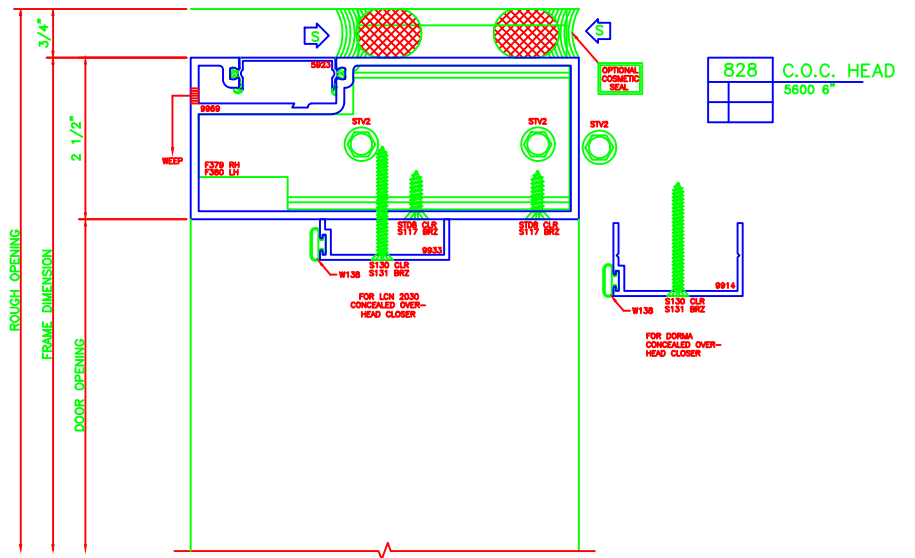


821 HEADER
5600 6"

ERASE NOTE:
OUTSWING HEAD FOR SURFACE
CLOSERS OR FLOOR CLOSERS



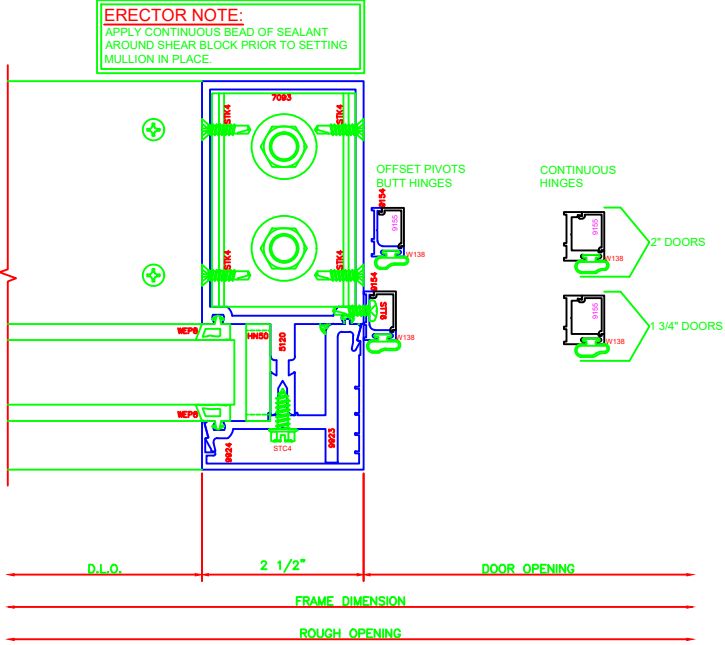
828 C.O.C. HEAD
5600 6"

825 O.G. VERT.
5600 6"

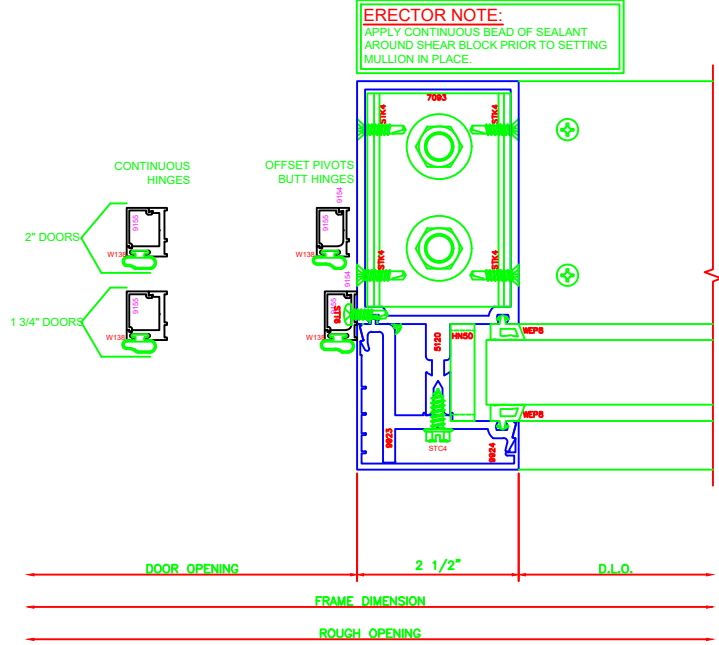
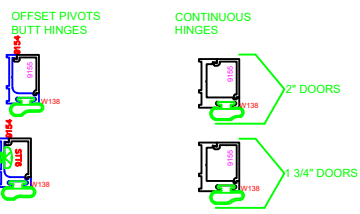
ERASE NOTE:
OUTSWING JAMB FOR OFFSET PIVOTS
OR BUTT HINGE AS SHOWN.
CONTINUOUS HINGE REQUIRES
4437/9155/STT6/W138

ERASE NOTE:
OUTSWING JAMB FOR OFFSET PIVOTS
OR BUTT HINGE AS SHOWN.
CONTINUOUS HINGE REQUIRES
4437/9155/STT6/W138

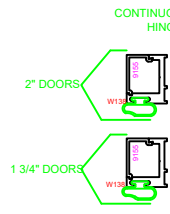
826 O.G. VERT.
5600 6"



ERECTOR NOTE:
APPLY CONTINUOUS BEAD OF SEALANT
AROUND SHEAR BLOCK PRIOR TO SETTING
MULLION IN PLACE.

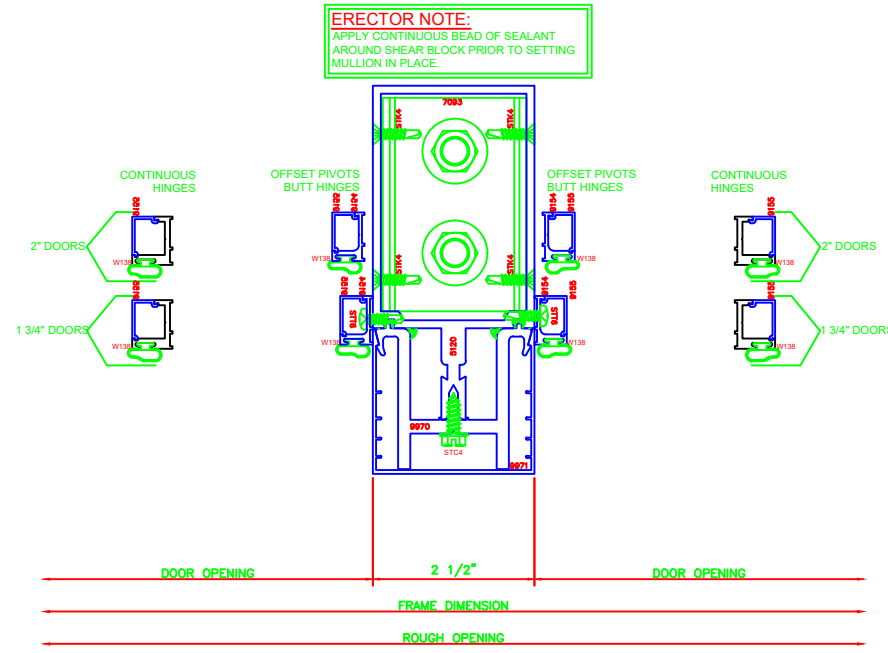


ERECTOR NOTE:
APPLY CONTINUOUS BEAD OF SEALANT
AROUND SHEAR BLOCK PRIOR TO SETTING
MULLION IN PLACE.

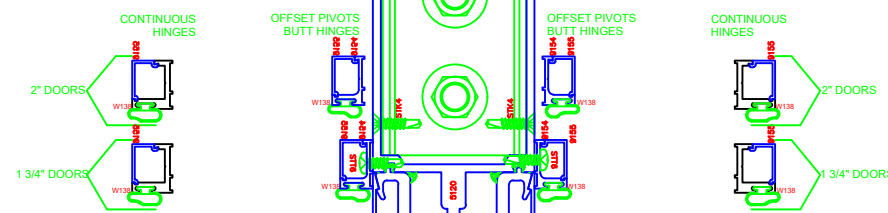


829 O.G. VERT.
5600 6"

ERASE NOTE:
OUTSWING JAMB FOR OFFSET PIVOTS
OR BUTT HINGE AS SHOWN.
CONTINUOUS HINGE REQUIRES
4437/9155/STT6/W138



ERECTOR NOTE:
APPLY CONTINUOUS BEAD OF SEALANT
AROUND SHEAR BLOCK PRIOR TO SETTING
MULLION IN PLACE.

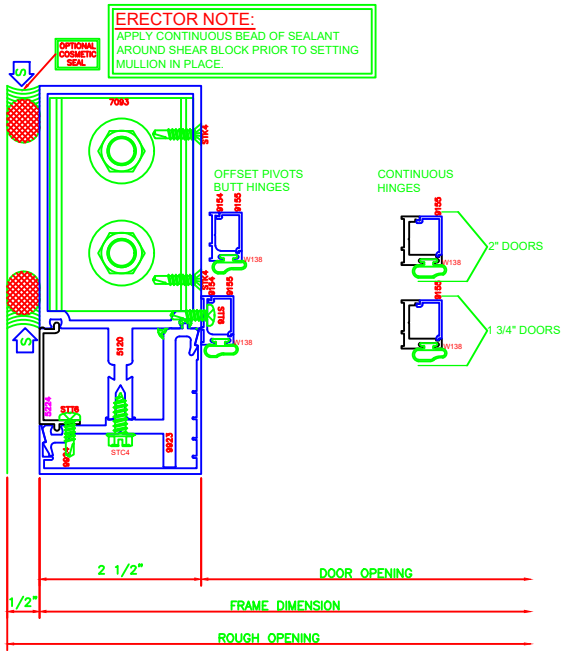


822 O.G. JAMB
5600 6"

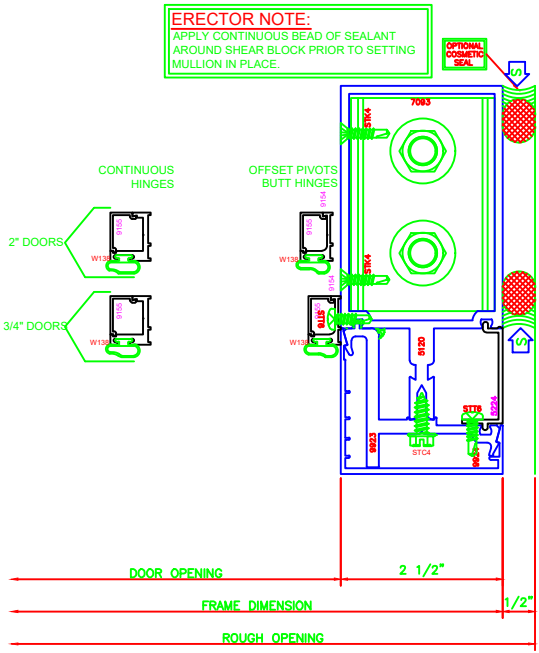
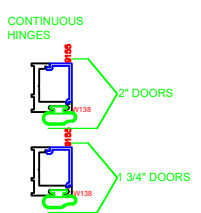
ERASE NOTE:
OUTSWING JAMB FOR OFFSET PIVOTS
OR BUTT HINGE AS SHOWN.
CONTINUOUS HINGE REQUIRES
4437/9155/STT6/W138

823 O.G. JAMB
5600 6"

ERASE NOTE:
OUTSWING JAMB FOR OFFSET PIVOTS
OR BUTT HINGE AS SHOWN.
CONTINUOUS HINGE REQUIRES
4437/9155/STT6/W138



ERECTOR NOTE:
APPLY CONTINUOUS BEAD OF SEALANT
AROUND SHEAR BLOCK PRIOR TO SETTING
MULLION IN PLACE.



ERECTOR NOTE:
APPLY CONTINUOUS BEAD OF SEALANT
AROUND SHEAR BLOCK PRIOR TO SETTING
MULLION IN PLACE.

