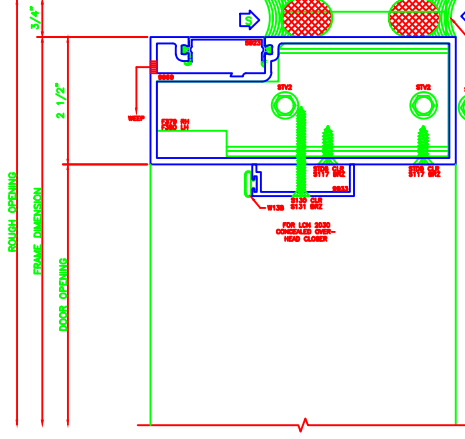


837 HEADER  
5600 0"

ERASE NOTE:  
OUTSWING HEAD FOR SURFACE CLOSERS



828 C.O.C. HEAD  
5600 0"

FOR USE WITH HINGED OVER-HEAD CLASPS  
FOR USE WITH OVER-HEAD CLASPS

841 O.G. VERT.  
5600 0"

ERASE NOTE:  
OUTSWING JAMB FOR OFFSET PIVOTS OR BUTT HINGE AS SHOWN, CONTINUOUS HINGE REQUIRES 1256

843 O.G. VERT.  
5600 0"

ERASE NOTE:  
OUTSWING JAMB FOR OFFSET PIVOTS OR BUTT HINGE AS SHOWN, CONTINUOUS HINGE REQUIRES 1256

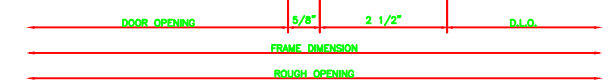
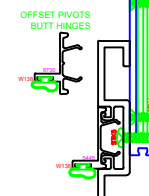
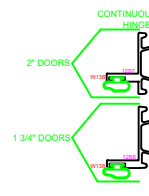
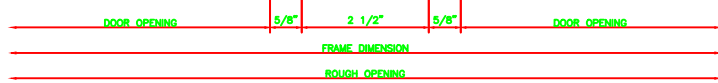
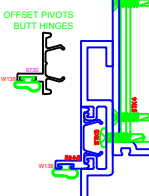
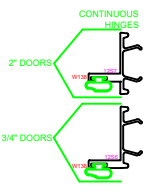
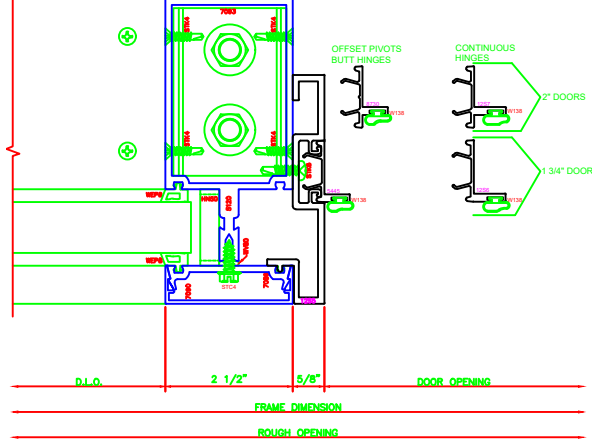
ERASE NOTE:  
OUTSWING JAMB FOR OFFSET PIVOTS OR BUTT HINGE AS SHOWN, CONTINUOUS HINGE REQUIRES 1256

842 O.G. VERT.  
5600 0"

ERECTOR NOTE:  
APPLY CONTINUOUS BEAD OF SEALANT AROUND SHEAR BLOCK PRIOR TO SETTING MULLION IN PLACE.

ERECTOR NOTE:  
APPLY CONTINUOUS BEAD OF SEALANT AROUND SHEAR BLOCK PRIOR TO SETTING MULLION IN PLACE.

ERECTOR NOTE:  
APPLY CONTINUOUS BEAD OF SEALANT AROUND SHEAR BLOCK PRIOR TO SETTING MULLION IN PLACE.



838 O.G. JAMB  
5600 0"

ERASE NOTE:  
OUTSWING JAMB FOR OFFSET PIVOTS OR BUTT HINGE AS SHOWN, CONTINUOUS HINGE REQUIRES 1256

ERASE NOTE:  
OUTSWING JAMB FOR OFFSET PIVOTS OR BUTT HINGE AS SHOWN, CONTINUOUS HINGE REQUIRES 1256

839 O.G. JAMB  
5600 0"

ERECTOR NOTE:  
APPLY CONTINUOUS BEAD OF SEALANT AROUND SHEAR BLOCK PRIOR TO SETTING MULLION IN PLACE.

ERECTOR NOTE:  
APPLY CONTINUOUS BEAD OF SEALANT AROUND SHEAR BLOCK PRIOR TO SETTING MULLION IN PLACE.

