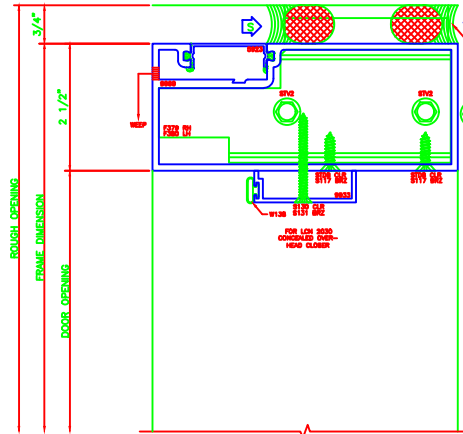


837 HEADER
5800 6"

ERASE NOTE:
OUTSWING HEAD FOR SURFACE
CLOSERS



828 C.O.C. HEAD
5800 6"

FOR USE WITH
OVER-HEAD CLOSERS

841 O.G. VERT.
5800 6"

ERASE NOTE:
OUTSWING JAMB FOR OFFSET PIVOTS
OR BUTT HINGE AS SHOWN.
CONTINUOUS HINGE REQUIRES 1256

843 O.G. VERT.
5800 6"

ERASE NOTE:
OUTSWING JAMB FOR OFFSET PIVOTS
OR BUTT HINGE AS SHOWN.
CONTINUOUS HINGE REQUIRES 1256

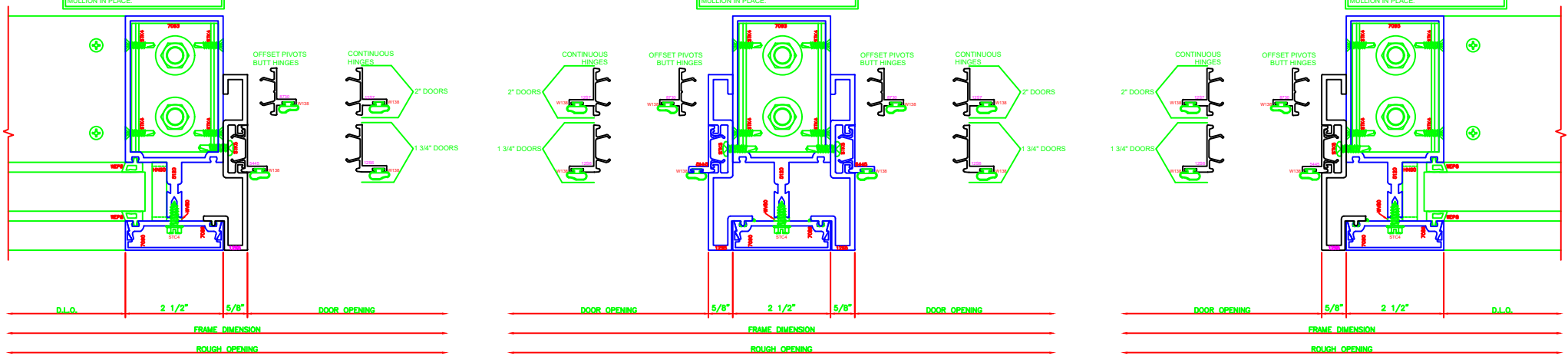
ERASE NOTE:
OUTSWING JAMB FOR OFFSET PIVOTS
OR BUTT HINGE AS SHOWN.
CONTINUOUS HINGE REQUIRES 1256

842 O.G. VERT.
5800 6"

ERECTOR NOTE:
APPLY CONTINUOUS BEAD OF SEALANT
AROUND SHEAR BLOCK PRIOR TO SETTING
MULLION IN PLACE.

ERECTOR NOTE:
APPLY CONTINUOUS BEAD OF SEALANT
AROUND SHEAR BLOCK PRIOR TO SETTING
MULLION IN PLACE.

ERECTOR NOTE:
APPLY CONTINUOUS BEAD OF SEALANT
AROUND SHEAR BLOCK PRIOR TO SETTING
MULLION IN PLACE.



838 O.G. JAMB
5800 6"

ERASE NOTE:
OUTSWING JAMB FOR OFFSET PIVOTS
OR BUTT HINGE AS SHOWN.
CONTINUOUS HINGE REQUIRES 1256

ERASE NOTE:
OUTSWING JAMB FOR OFFSET PIVOTS
OR BUTT HINGE AS SHOWN.
CONTINUOUS HINGE REQUIRES 1256

839 O.G. JAMB
5800 6"

ERECTOR NOTE:
APPLY CONTINUOUS BEAD OF SEALANT
AROUND SHEAR BLOCK PRIOR TO SETTING
MULLION IN PLACE.

ERECTOR NOTE:
APPLY CONTINUOUS BEAD OF SEALANT
AROUND SHEAR BLOCK PRIOR TO SETTING
MULLION IN PLACE.

