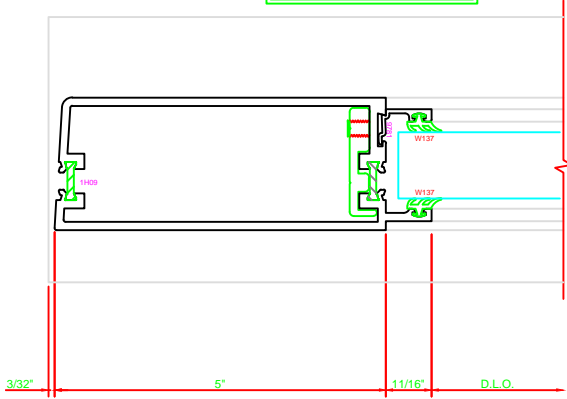


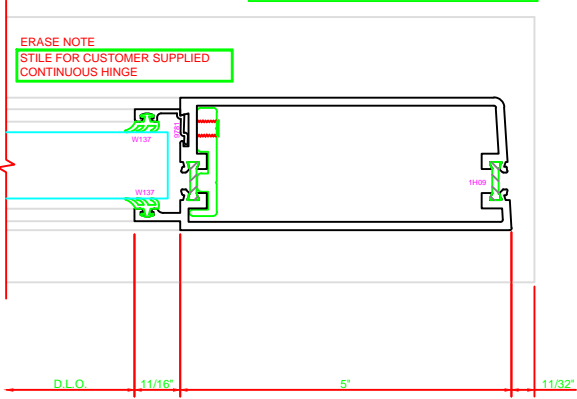
300 STILE
S/A D502 FOR OFFSET PIVOTS

ERASE NOTE
BUTT HINGES CAN NOT BE USED
WITH THERMASTILE DOORS

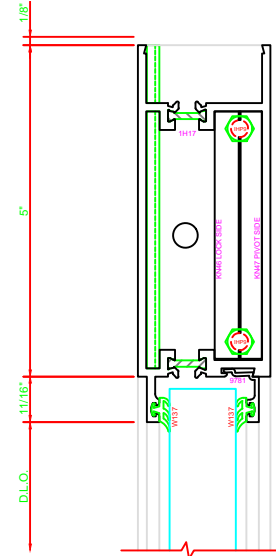


303 STILE
S/A D502 CONTINUOUS HINGE

ERASE NOTE
THIS IS A BUY OUT OR CUSTOMER SUPPLIED
HINGE. CHECK PROFILE AND CLEARANCE
BEFORE USING THIS DETAIL. CHECK FASTENER
LOCATIONS OF HINGE FOR INTERFERENCE AT
DOOR OR JAMB.

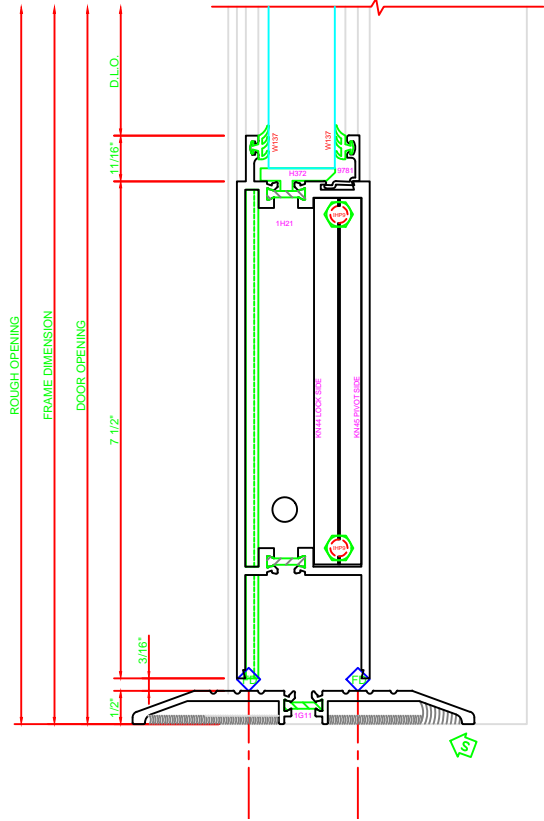


ERASE NOTE
STILE FOR CUSTOMER SUPPLIED
CONTINUOUS HINGE



100 TOP RAIL
S/A D502

ERASE NOTE
TOP RAIL FOR SURFACE CLOSERS,
OR DORMA TYPE C.O.C., NOT LCN
C.O.C.



200 BOTTOM RAIL
S/A D502

ROUGH OPENING
FRAME DIMENSION
DOOR OPENING
7 1/2"