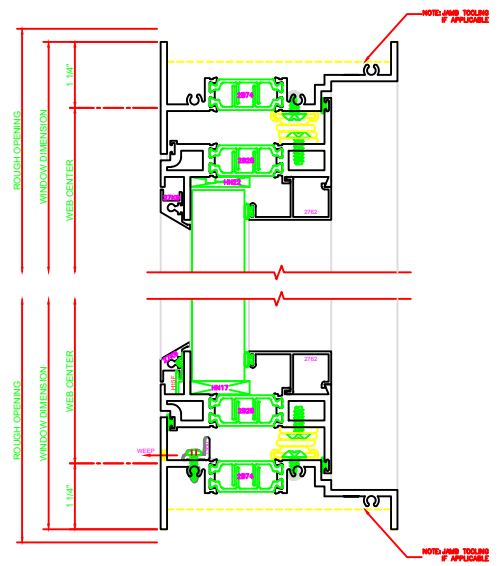


130 HEAD  
SERIES: 450G  
CASEMENT IN  
4-BAR ARMS

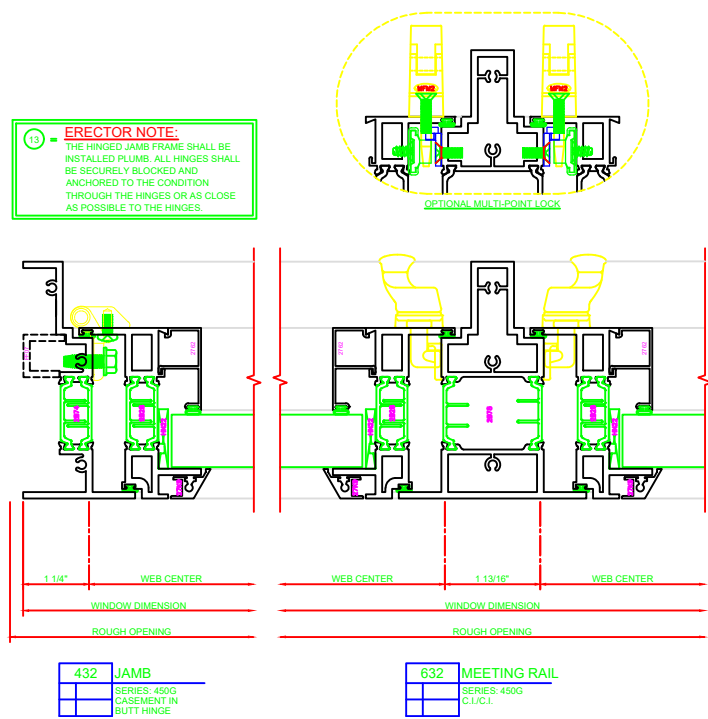
230 SILL  
SERIES: 450G  
CASEMENT IN  
4-BAR ARMS

430 JAMB  
SERIES: 450G  
CASEMENT IN  
4-BAR ARMS

632 MEETING RAIL  
SERIES: 450G  
C.I./C.I.



## 4-BAR ARMS BUTT HINGE



13 ERECTOR NOTE:  
THE HINGED JAMB FRAME SHALL BE  
INSTALLED PLUMB. ALL HINGES SHALL  
BE SECURELY BLOCKED AND  
ANCHORED TO THE CONDITION  
THROUGH THE HINGES OR AS CLOSE  
AS POSSIBLE TO THE HINGES.

131 HEAD  
SERIES: 450G  
CASEMENT IN  
BUTT HINGE

231 SILL  
SERIES: 450G  
CASEMENT IN  
BUTT HINGE

432 JAMB  
SERIES: 450G  
CASEMENT IN  
BUTT HINGE

632 MEETING RAIL  
SERIES: 450G  
C.I./C.I.

